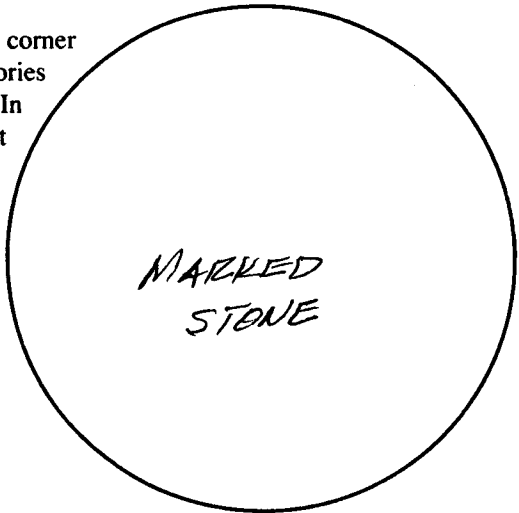


Wyoming Certified Land Corner Recordation Certificate

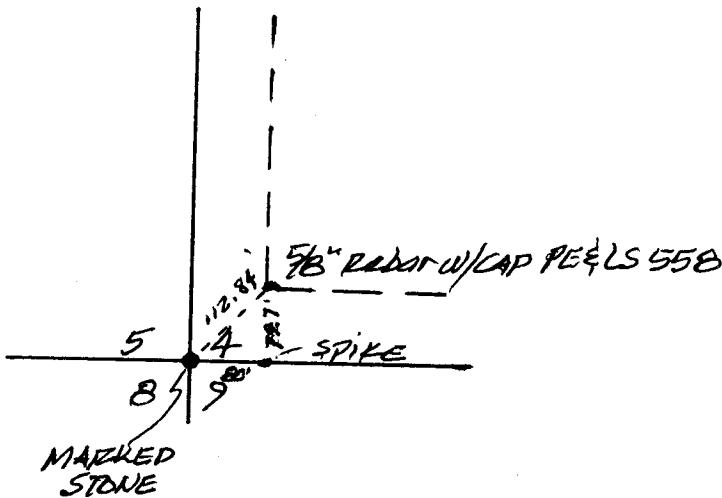
This form is to be completed in accordance with W.S. 36-11-101, printed in black ink or typed, and shall be for one individual corner.

Describe below, or show in sketch attached to this form, the corner evidence found. Include condition and type of monument, accessories and ties. Describe any maintenance or rehabilitation performed. In the circle to the right, show monument inscription. If monument is determined lost or obliterated, restate the GLO or BLM original field note record; describe or show the procedure used to reestablish the corner and all data as above for a found monument.



Field Date 11/19-92 Office Reference _____

Monument Inscription



RECEIVED
 LARAMIE COUNTY
 CHEYENNE, WY.
 112482
 93 JAN 6 AM 10 10

State of Wyoming
 Office of County Clerk
 County of Laramie

This Certified Land Corner Recordation Certificate was filed for record on the 6th day of January, 1993 in Book No. T 12 N, R 70 W, on Alpha-Numeric coordinates E-9 and was noted on the Cross Index Plat.

County Clerk

Corner Type: Aliquot Corner Other Section(s) 5, 4, 8, 9 Meridian 6TH
 Corner Name SECTION Township 12 N Range 70 W Page _____
 Sheet 1 of 1

